

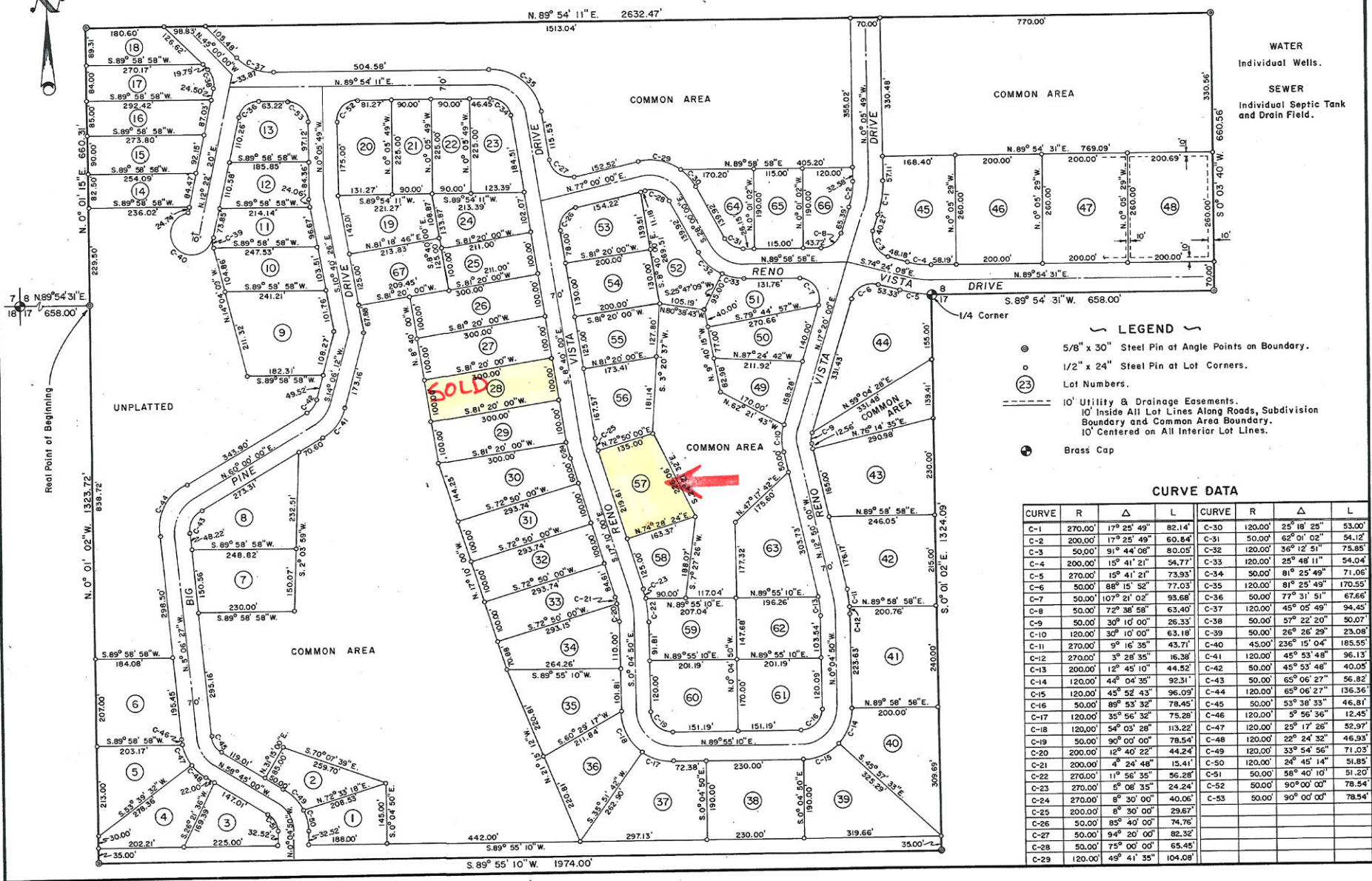
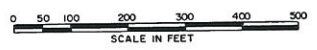
Sanitary Restriction Under Title So
Removed By Instrument No. 85505

Sanitary restriction in force
under Title 50
Chapter 13, Idaho Code.

NORTHLAKE SUBDIVISION NO. 1

A PORTION OF THE S 1/2 S 1/2 S 1/2 SECTION 8, T.15N., R.3E., B.M. AND THE N 1/2 NW 1/4 SECTION 17, T.15N., R.3E., B.M.
VALLEY COUNTY, IDAHO

SMITH & MONROE ENGINEERS INC.



WATER
Individual Wells.
SEWER
Individual Septic Tank
and Drain Field.

- LEGEND**
- 5/8" x 30" Steel Pin at Angle Points on Boundary.
 - 1/2" x 24" Steel Pin at Lot Corners.
 - ② Lot Numbers.
 - - - 10' Utility & Drainage Easements.
10' Inside All Lot Lines Along Roads, Subdivision Boundary and Common Area Boundary.
 - Brass Cap

CURVE DATA

CURVE	R	Δ	L	CURVE	R	Δ	L
C-1	270.00'	17° 25' 49"	82.14'	C-30	120.00'	25° 18' 25"	53.00'
C-2	200.00'	17° 25' 49"	60.84'	C-31	50.00'	62° 01' 02"	54.12'
C-3	50.00'	91° 44' 08"	80.05'	C-32	120.00'	36° 12' 51"	75.85'
C-4	200.00'	15° 41' 21"	54.77'	C-33	120.00'	28° 48' 11"	54.04'
C-5	270.00'	15° 41' 21"	73.93'	C-34	50.00'	81° 25' 49"	71.06'
C-6	50.00'	88° 15' 52"	77.03'	C-35	120.00'	81° 25' 49"	170.55'
C-7	50.00'	107° 21' 02"	93.68'	C-36	50.00'	77° 31' 51"	67.66'
C-8	50.00'	72° 38' 58"	63.40'	C-37	120.00'	45° 05' 49"	94.45'
C-9	50.00'	30° 10' 00"	26.33'	C-38	50.00'	57° 22' 20"	50.07'
C-10	120.00'	30° 10' 00"	63.18'	C-39	50.00'	26° 26' 29"	23.08'
C-11	270.00'	9° 16' 35"	43.71'	C-40	45.00'	236° 15' 04"	185.55'
C-12	270.00'	3° 28' 35"	16.38'	C-41	120.00'	45° 53' 48"	96.13'
C-13	200.00'	12° 45' 10"	44.52'	C-42	50.00'	45° 53' 48"	40.05'
C-14	120.00'	44° 04' 35"	92.31'	C-43	50.00'	65° 06' 27"	56.82'
C-15	120.00'	45° 52' 43"	96.09'	C-44	120.00'	65° 06' 27"	136.36'
C-16	50.00'	89° 53' 32"	78.45'	C-45	50.00'	53° 38' 33"	46.81'
C-17	120.00'	35° 56' 32"	75.28'	C-46	120.00'	5° 56' 36"	12.45'
C-18	120.00'	54° 03' 28"	113.22'	C-47	120.00'	29° 17' 26"	52.97'
C-19	50.00'	90° 00' 00"	78.54'	C-48	120.00'	22° 24' 32"	46.93'
C-20	200.00'	12° 40' 22"	44.24'	C-49	120.00'	33° 54' 56"	71.03'
C-21	200.00'	4° 24' 48"	15.41'	C-50	120.00'	24° 45' 14"	51.85'
C-22	270.00'	11° 56' 35"	56.28'	C-51	50.00'	58° 40' 10"	51.20'
C-23	270.00'	5° 06' 35"	24.24'	C-52	50.00'	90° 00' 00"	78.54'
C-24	270.00'	8° 30' 00"	40.06'	C-53	50.00'	90° 00' 00"	78.54'
C-25	200.00'	8° 30' 00"	29.67'				
C-26	50.00'	85° 40' 00"	74.76'				
C-27	50.00'	94° 20' 00"	82.32'				
C-28	50.00'	75° 00' 00"	65.45'				
C-29	120.00'	49° 41' 35"	104.08'				