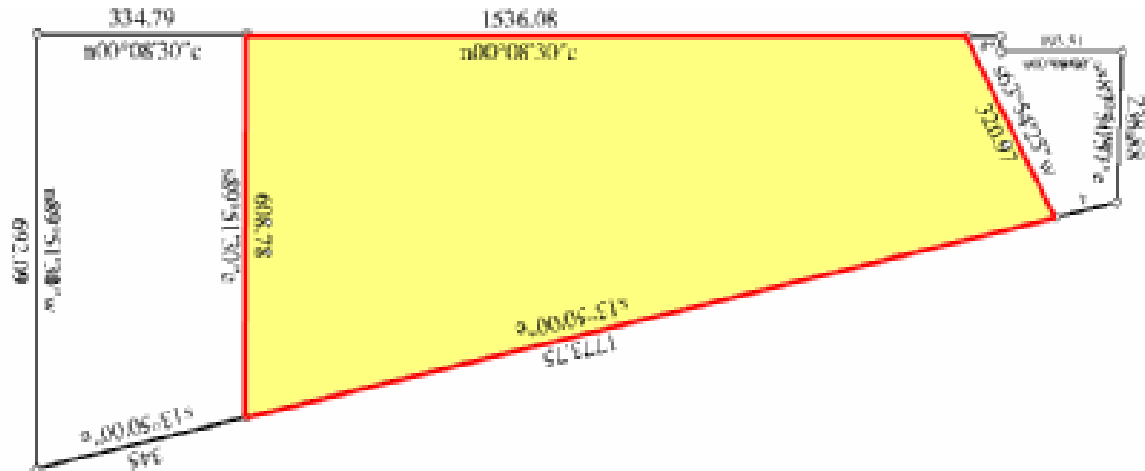




Valley County Business Park



PUD approved by Valley County for a mix of Commercial buildings and storage units. The Commercial building consists of 2 pods each containing 4 buildings at 2750 square feet. The storage facility was designed to handle the areas growing demand for storage. The intent is to sell each storage unit in a manner similar to condominiums. Each unit could be sold separately. This project has great potential and an even better location.

MICHELLE BASYE

Cell 630-4702

McCall 634-1234

Donnelly 325-5051

michelle@brundagerealty.com



www.brundagerealty.com